

NOVEMBER

3-5

2023

# XI INDIAN SOCIAL WORK CONGRESS 2023



*Theme*

**LEAVE NO ONE BEHIND:  
REVISITING PEDAGOGY AND PRACTICE  
OF SOCIAL WORK IN INDIA**

**ORGANISED BY**  
**DEPARTMENT OF SOCIAL WORK, MAULANA AZAD NATIONAL URDU UNIVERSITY**  
**&**  
**NATIONAL ASSOCIATION OF PROFESSIONAL SOCIAL WORKERS IN INDIA**  
**IN COLLABORATION WITH**  
**UNITED NATIONS POPULATION FUND (UNFPA), NEW DELHI**  
**@**  
**MANUU CAMPUS, GACHIBOWLI, HYDERABAD, TELANGANA**

**REGISTRATION OPENS ON : 10TH JULY 2023**  
**REGISTRATION CLOSSES ON : 10TH SEPTEMBER 2023**

[www.napswi.org](http://www.napswi.org)  
[manuulliswc@gmail.com](mailto:manuulliswc@gmail.com) | [shahid@manuu.edu.in](mailto:shahid@manuu.edu.in)

# THE XI ISWC BACKDROP

We are pleased to invite academicians, researchers, practitioners, students and social work professionals to be part of this historic experience to discuss and deliberate some of important issues and challenges of professional social work today.

Social work is committed to facilitating and promoting self-reliant individuals, sustainable group practices and an egalitarian and undivided society through the science of teaching and the art of doing. With the early moorings in social service traditions and organized social welfare, social work has evolved to cater the changing needs of society in the wake of industrialization, urbanization and obtuse development. It marked its presence to provide specialized services to individuals, groups and communities.



## **SOCIAL WORK AS HUMAN SERVICE PROFESSION IS COMMITTED-TRANSFORMING OUR WORLD: THE 2030 AGENDA FOR SUSTAINABLE DEVELOPMENT.**

The global commitment to LNOB Pledge (leave no one behind) amidst shrinking state welfare, diminishing social capital and increasing humanitarian crisis demand revisiting the pedagogies and practices. It is important to revisit the existing practices of teaching-learning on one hand, and on the other, to review, reflect and learn from the sustainable models of engaging people on the margins. This Congress would like to revisit the efforts of social work community in the past and deliberate on the plans for future.



In the last eight decades, social work progressed enormously in terms of the spread of social work educational institutions and students receiving professional education and embarking on their journey as human service workforce. The period also saw dynamic responses and initiatives on the part of the professional bodies of social work, government regulatory bodies, academic institutions and individuals in shaping and imagining the profession. This resulted in the production of the voluminous literature on social work including the textbooks and encyclopedias of social work, review reports and model curricula, and the publication of professional journals.

Adhering to the pedagogy of the question rather than the answer, there is a need to re-examine and reflect on the journey travelled so far. The profession of social work in India is not without contestations. Still, there are many good old unresolved questions around the very professional status of social work and its indigenous base in India which need to be explored in conceptual and theoretical realms. During COVID-19, the community of professional social workers in India has launched a digital advocacy campaign for setting a national council for social work education. It is quite ironic that social work is still entangled with the rigidity of societal structures and the uncertainty of professional limits coupled with profound intellectual and ethical musings.

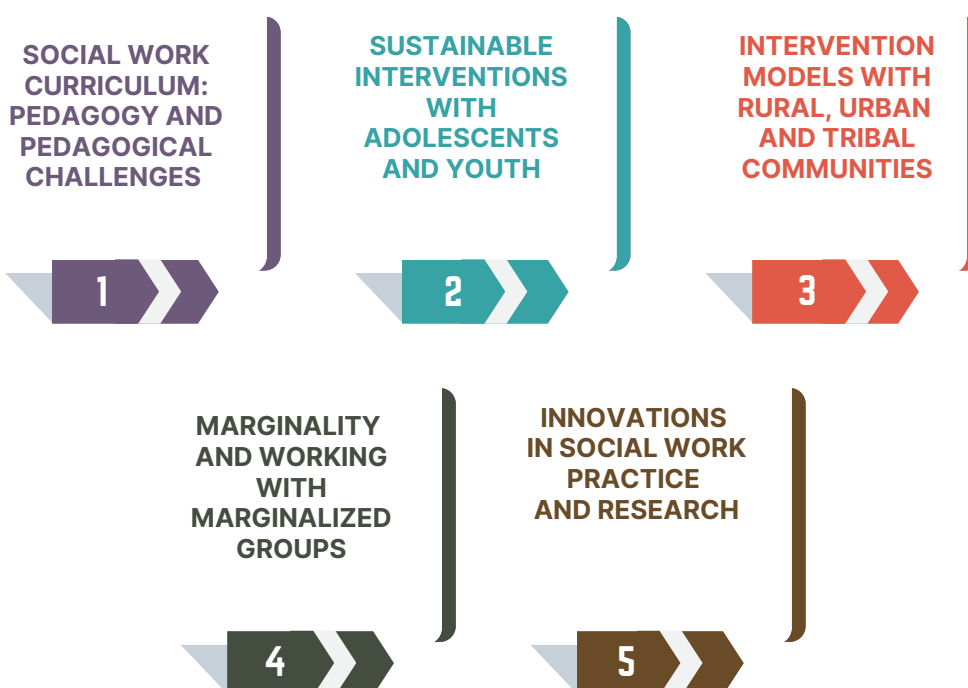
There are also questions on the future of social work in the wake of the shrinking welfare sector and competition in the job market from allied professions. Equally, pertinent is the need to look back and reflect on our socio-political legacy, the professional literature developed, the evolving nature of the curriculum and the intervention models that emerged from the field. The challenges and opportunities within the larger questions of disciplinary contours and professional competencies are two aspects for critical scrutiny. This requires a renewed discussion on social work pedagogies and practices in India. The voyage of relooking the past paradigms of social work requires a convergence of its sailors (educators and practitioners) for deliberations in the fast-changing contemporary times.

We call upon the social work community representing the academicians, professionals, researchers and other stakeholders committed to human service professions to come and contribute to this deliberation on social work education in India. We hope that together the fraternity could introspect and reflect on a better present as well as the future of our profession, professional education and sustainable practices.



## THEME AND SUB-THEMES

Academicians, practitioners, researchers and young professionals are encouraged to share and reflect their valuable academic and field experiences. A paper should engage at least one component of a given sub-theme.



## **SOCIAL WORK CURRICULUM : PEDAGOGY AND PEDAGOGICAL CHALLENGES**

- National framework; regional specificities; and vernacular challenges in making and transacting curriculum in the context of National Education Policy 2020 and Sustainable Development Goals 2030
- Accounts of educators and practitioners on teaching and practice of different methods of working with people
- Lessons from social reform movements/social reformers and civil rights/grassroots movements
- Theorizing indigenous knowledge (nature, context and relevance) for social work education and practice

## **SUSTAINABLE INTERVENTIONS WITH ADOLESCENTS AND YOUTH**

- Adolescents, youth and sustainable development goals 2030
- Universal access to sexual and reproductive health
- Demographic dividend and life skills
- Social work and youth friendly mental health services
- Intervention by social work professionals in promoting reproductive choices and reproductive health services

## **INTERVENTION MODELS WITH RURAL, URBAN AND TRIBAL COMMUNITIES**

- SDG-2030 and emerging issues in rural, urban and tribal spaces
- Poverty alleviation initiatives by state and non-state actors
- Education, livelihoods and self-governance
- Exclusion and right assertion movements
- Role of CSR in creating sustainable communities
- Non-governmental organizations and sustainability

## **MARGINALITY AND WORKING WITH MARGINALIZED GROUPS**

- Muslims and other minorities
- Homeless, elderly and LGBTQIA+
- Migrants, refugees and persons with disabilities
- Social work and persons living with HIV/AIDS
- Environment and social work
- Gender centric social work

## **INNOVATIONS IN SOCIAL WORK PRACTICE AND RESEARCH**

- School/Sanskrit Vidyalayas/Madrasas and community linkages
- Digital revolution and social work
- New practice models in different sectors
- Social innovation and social enterprises for sustainability
- COVID pandemic and social work
- New paradigms in social work research
- Collaborations, partnerships and co-creation



## ABOUT THE NAPSWI

National Association of Professional Social Workers in India (NAPSWI) is one of the largest member-based organization of professional social workers in the country. Established in 2005, NAPSWI is a non-profit, non-political, national level organization dedicated to the promotion of the standard and status of social work profession. NAPSWI intends to promote the social work profession across the country with the aim of improving the quality of services in the social welfare and social development sectors on one hand and protecting interests of social work professionals on the other. NAPSWI has been granted a special consultative status by UN ECOSOC since 2019. NAPSWI believes in shaking hands with different stakeholders- be it social work educational institutions, government, non-government, civil society or any likeminded person/institution with similar philosophy.

## ABOUT THE UNIVERSITY AND THE DEPARTMENT OF SOCIAL WORK

Maulana Azad National Urdu University (MANUU) is a Central University established by an Act of Parliament in 1998. The main campus of MANUU is located in Gachibowli, Hyderabad, Telangana State, over an area of 200 acres. MANUU has been accredited with A+ Grade by NAAC. The University is named after Maulana Abul Kalam Azad, the freedom fighter and outstanding scholar, who as the first Education Minister of Independent India envisioned and laid the foundation of technical, scientific and higher education in India. The academic thrust of MANUU lies in its unique service of providing education from elementary to doctoral levels through the medium of Urdu language. MANUU is the only academic destination offering a large number of higher education programmes for Urdu speaking people in the country. MANUU has its presence in 11 States across India.

The Department of Social Work aspires to develop social work professionals with an inclination and orientation to work with the marginalized sections and contribute to human wellbeing. It is a young department which started Master of Social Work in 2009 and doctoral degree program in year 2014. More recently department has initiated skill lab for facilitating students to make sense of (hegemonic) common sense. It endeavours to facilitate students in questioning their own perceptions, develop sensitivity to issues and imbibe progressive human values.

## ABOUT THE UNITED NATIONS POPULATION FUND (UNFPA)

UNFPA is the United Nations' sexual and reproductive health agency. UNFPA's mission is to deliver a world where every pregnancy is wanted, every childbirth is safe and every young person's potential is fulfilled. UNFPA calls for the realization of reproductive rights for all and supports access to a wide range of sexual and reproductive health services, including voluntary family planning, quality maternal health care and comprehensive sexuality education.

Website: <https://india.unfpa.org/en>

## **CHIEF PATRON**

**Prof. Syed Ainul Hasan**

Vice Chancellor, Maulana Azad National Urdu University

## **PATRON**

**Prof. Farida Siddiqui**

Dean, School of Arts and Social Sciences, MANUU

## **CONFERENCE SUPPORTING GROUP**

**Prof. R P Dwivedi**

President, NAPSWI, Varanasi

**Prof. Sanjoy Roy**

Vice President, NAPSWI, Delhi

**Prof. Ankur Saxena,**

Secretary, NAPSWI, Baroda

**Prof. Atul Pratap Singh**

Treasurer, NAPSWI, Delhi

**Prof. L S Ghandi Doss**

President, INPSWA, Bangalore

**Prof. P K Shahjahan**

Global Vice President, International Council on Social Welfare, TISS

**Prof. Suresh Pathare**

President (South Asia) International Council on Social Welfare, Ahmednagar

**Prof. Pratibha J Mishra**

EC Member, NAPSWI, Chhattisgarh

**Professor Asok Kumar Sarkar**

EC Member, NAPSWI, West Bengal

**Prof. Anoop Kumar Bhartiya**

EC Member, NAPSWI, Lucknow, UP

**Prof. Keshav Walke**

EC Member, NAPSWI, Nagpur, Maharashtra

**Mr. Narender Sindhi**

EC Member, NAPSWI, Bhiwadi, Haryana

**Mr. Suneel Vatsyayan**

EC Member, NAPSWI, New Delhi

### **CONFERENCE ADVISOR**

**Prof. Sanjai Bhatt,**

University of Delhi (formerly), New Delhi  
Mob: 9811516636 E-mail: sanjaibhatt@gmail.com

### **ORGANIZING SECRETARY**

**Prof. Mohd. Shahid**

Head, Department of Social Work, MANUU  
Mob: 9958222106 Email: shahid@manuu.edu.in

### **LOCAL ORGANIZING COMMITTEE**

**Prof. Md. Shahid Raza**

Coordinator for Hospitality & Logistics  
Mob: 7382601330

**Md. Israr Alam & Dr. Abul Salim Khan**

Coordinator for Arrangements & Preparation  
Mob: 7382601330

**Dr. Md. Aftab Alam**

Coordinator for Queries & Communication [Abstracts & Papers]  
Mob: 9391478880

**Abu Osama**

Coordinator for PR & Publicity  
Mob: 9718925457

## **CALL FOR PAPERS**

We invite participants to send their abstracts and papers. An abstract must include the central thrust of the paper, methodology and findings and should not be less than 500 words (12 Times New Roman font size with 1.5 line spacing). The size of the full paper must not exceed the word limit of 5000 with APA 6th referencing style. The abstract has to be submitted through the online portal at the time of registration only.

Once an abstract is selected, the participant shall be communicated to send their full paper to [manuulliswc@gmail.com](mailto:manuulliswc@gmail.com). The full paper should fall under any of the sub-themes and in the subject of the e-mail, the concerned sub-theme must be written. An abstract book shall be published. The last date of registration and submission of abstract is 10th September, 2023.

## **REGISTRATION**

A participant is required to submit the registration form along with the abstract and keep the full paper ready for submission through online mode. Kindly register online via <https://napswi.org/cong> for initial registration, submission of abstract and online payment.

## REGISTRATION DETAILS

Category	Early Registration (Upto 10th September 2023) ₹(INR)	Delayed Registration for only Participation /On Spot Registration ₹(INR)
NAPSWI Members	2500	3000
Non- NAPSWI Members	3000	3500
BSW and MSW Student	500	1000
Research Scholars (M Phil/Ph.D.)	1000	1500
Foreign Delegates	\$ 50	\$80
NGO Delegates	2000	3000

## REGISTRATION DATES

Last Date of Registration	<b>10th September 2023</b>
Last Date of Receiving Abstract	<b>10th September 2023</b>
Last Date of Receiving Full Paper	<b>10th October 2023</b>

## PAYMENT MODE

Registration is considered completed only after the full payment is received. All payments related to ISWC shall be transacted through the online payment system. In case of any difficulty, you can contact us. In case of cancellation, only half the amount will be returned after the Congress is over. Please note that the Congress is not responsible for the bank charges.

Account Name	National Association of Professional Social Workers in India
Account No	921010009040295
Bank	AXIS Bank, Noida
IFSC Code	UTIB0003431



## REGISTRATION ENTITLEMENTS

- Opening Ceremony
- Plenary/Technical Sessions
- Abstract Book
- Subsidized Publication
- 3-day Lunch and 1-day Dinner
- Book Exchange Groups
- Social Programmes
- Cultural Activities
- Trade Exhibition
- Closing Ceremony
- Certificate of Participation

## ACCOMMODATION & TRAVEL SUPPORT

Accommodation shall be provisioned on prior payment. The arrangement for comfortable accommodation on reasonable and subsidized rates shall be made on the first-cum-first serve basis in the campus and nearby places. Participants have to bear the travel expense on their own as there is no travel support from our side.

## CONFERENCE VENUE

The conference shall be held at the university headquarters located at Gachibowli, Hyderabad 500032. It is located at the heart of the city. The nearest airport is Rajiv Gandhi International Airport, Shamshabad, directly linked to Nehru Outer Ring Road from/to the university. Hyderabad Deccan, Secunderabad, Kacheguda, Lingampalli and Begumpet are the major railway stations connecting all over the country. Interstate buses from/to Gachibowli are easily available. The weather is expected to be pleasant in the month of November.

**CONFERENCE MODE** The congress shall be held in an offline mode only.

**PUBLICATION** The selected quality papers shall be considered for an edited volume from a reputed national/international publisher.

## BEST RESEARCH PAPERS

Research scholars, faculty members and practitioners are encouraged to develop theoretically embedded research papers. **20 best research papers shall be selected on the basis of quality of presentation and peer review report on full paper.** The first author of each such paper shall be provided travel assistance/logistics support up to 5000 rupees (on the production of valid bills) as token of appreciation and recognition.

## PLENARY SESSIONS

There shall be plenary sessions with invited experts from the field and academia. The plenary sessions are planned on three thematic areas: Social Work Curriculum; Sustainable Interventions with Adolescents and Youth; and School- Community Linkages.

## MEMORIAL LECTURES

In the memories of renowned social work educators, there shall be memorial lectures delivered by prominent social work educators during the conference. The details will be announced later on.

## PARTICIPATION OF INTERNATIONAL SOCIAL WORK COMMUNITY

Scholarly established social work academics and practitioners from international fraternity shall also interact with the conference participants through online mode. Social servants and social activists from all across the country are also likely to participate in the conference.

## SOCIAL PROGRAMMES

### STUDENTS FORUM

The Congress has planned a Social Work Students Forum for the student-member of NAPSWI (BSW and MSW) with the purpose to provide opportunities to budding social work professionals. The details shall be communicated later. Interested students /institutions willing to participate can write to us.

### BOOK RELEASE

The Congress will host the RELEASE of BOOKS related to social work. The authors and/or publishers can submit their request for release of their books. Each book release shall be given 10 minutes-time and chaired by an eminent academician / practitioner (to be decided by a committee in consultation with the author/ publisher). This event shall be a sponsored event. The Congress shall encourage the provision of special price of such book for the Congress delegates.

### POSTER/SLOGAN FOR NATIONAL COUNCIL FOR SOCIAL WORK EDUCATION

NAPSWI is part of an advocacy campaign to enact legislation to establish the National Council for Social Work Education. We hereby announce a poster /slogan/message competition in the XI ISWC. Any social work student, research scholar, teacher or practitioner can participate. The selected poster/slogan/message will be displayed and rewarded with a certificate and exemption of registration fees. The rules in this regard can be asked from NAPSWI office or its website.

### CULTURAL PROGRAM &HYDERABAD TOUR

Besides the conference, the university students shall perform various cultural activities in the open-air theatre of the university for the conference participants and delegates during evening timings. The organizers shall arrange a visit to the selected historical places of Hyderabad.

### PRE AND POST CONGRESS ACTIVITIES/WORKSHOPS

Interested persons may send their proposals to the Organizing Secretary latest by 31st July 2023.

## CONTACT

### ORGANIZING SECRETARY, THE XI INDIAN SOCIAL WORK CONGRESS 2023

C/o Prof. Mohd. Shahid  
Head, Department of Social Work  
Maulana Azad National Urdu University  
Gachibowli, Hyderabad (Telangana) 500032, India  
Email: manuulliswc@gmail.com

### NAPSWI MEMBERSHIP FORM:

Please visit [www.napswi.org](http://www.napswi.org) and apply online for membership.  
To know more write to us at  
Email: [napswi@gmail.com](mailto:napswi@gmail.com)

### IMPORTANT DATES

Last Date of Registration	10th September 2023
Last Date of Receiving Abstract	10th September 2023
Last Date of Receiving Full Paper	10th October 2023

Supported by





**Department of Social Work**  
**Maulana Azad National Urdu University**  
(A Central University, Ministry of Education, Govt. of India)  
Accredited as "A+" Grade by NAAC  
Gachibowli, Hyderabad-500 032  
Ph.040-23006612 -15  
[www.manuu.edu.in](http://www.manuu.edu.in)

 [manuuhydofficial](https://www.facebook.com/manuuhydofficial)  [officialmanuu](https://twitter.com/officialmanuu)  [imcmmanuu](https://www.youtube.com/channel/UCmcmmanuu)  [manuuhyd](https://www.instagram.com/manuuhyd)